

ALLEN

Activity at the end of June 2023

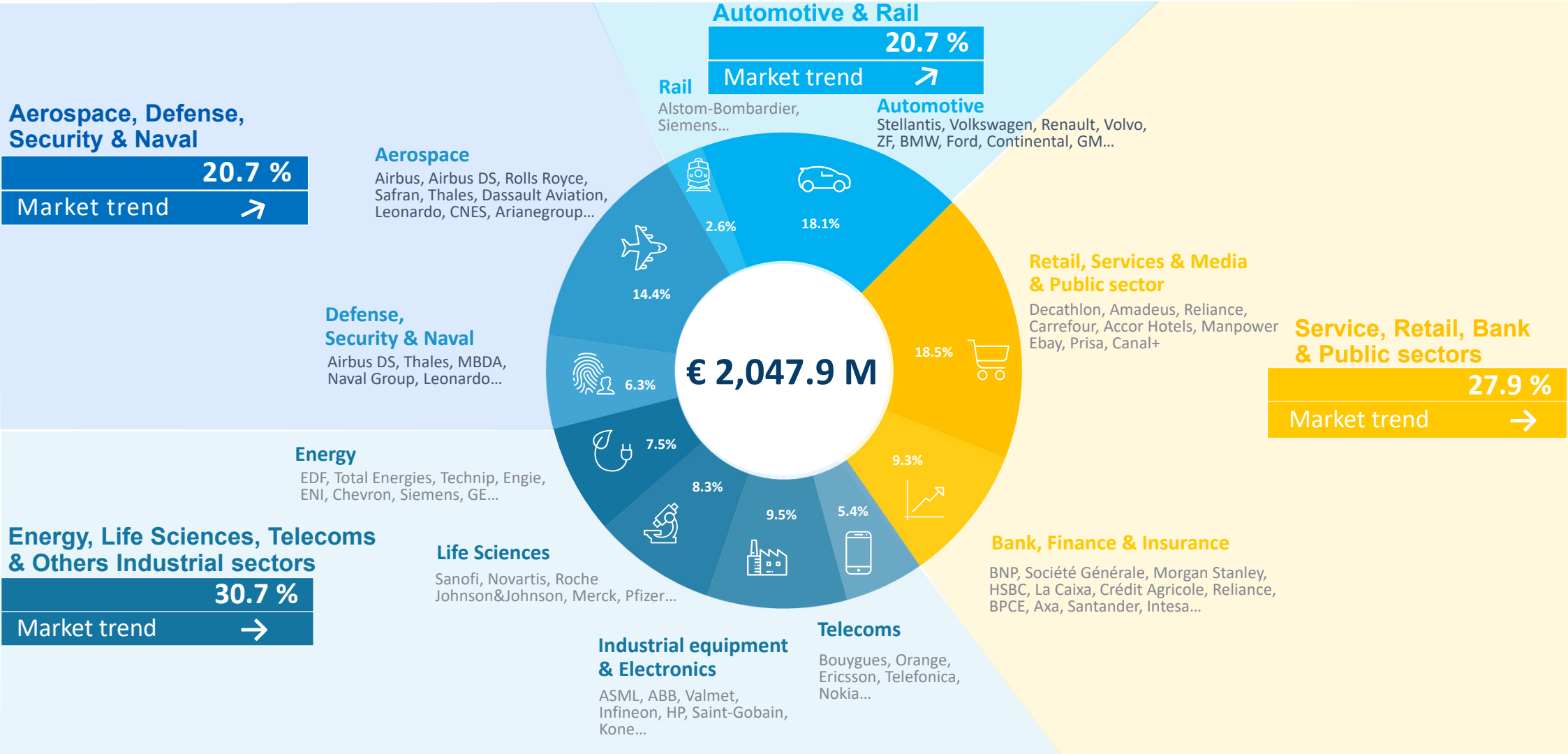


Bruno Benoliel
Deputy Chief Executive Officer

Paris, July 27th, 2023



BREAKDOWN OF TURNOVER PER SECTOR (AS A % OF REVENUE) AS AT JUNE 30TH 2023





BREAKDOWN OF TURNOVER PER GEOGRAPHICAL AREA AS AT JUNE 30TH 2023

COUNTRY	YTD				Change			
	2022	%	2023	%	Published	Change in scope	Forex	Organic, excl. Forex effect
FRANCE	598.4	32.8%	654.7	32.0%	9.4%	0.0%	0.0%	9.4%
IBERIC	159.1	8.7%	188.6	9.2%	18.5%	1.3%	0.0%	17.2%
GERMANY	156.3	8.6%	184.1	9.0%	17.8%	5.6%	0.0%	12.2%
UK	95.6	5.2%	161.0	7.9%	68.4%	56.6%	- 4.5%	16.3%
ITALY	122.6	6.7%	154.7	7.6%	26.1%	0.0%	0.0%	26.1%
BENELUX	99.1	5.4%	114.2	5.6%	15.3%	0.0%	0.0%	15.3%
SCANDINAVIA	94.2	5.2%	96.5	4.7%	2.5%	- 0.5%	- 5.8%	8.8%
EASTERN EUROPE	40.1	2.2%	53.0	2.6%	32.2%	4.9%	0.3%	27.1%
SWITZERLAND	32.2	1.8%	31.9	1.6%	- 1.0%	0.0%	4.4%	- 5.4%
EUROPE (W/O FRANCE)	799.2	43.8%	984.0	48.0%	23.1%	8.2%	- 1.0%	15.8%
NORTH AMERICA	265.8	14.6%	238.7	11.7%	- 10.2%	- 17.2%	0.1%	6.9%
ASIA PACIFIC	149.6	8.2%	160.6	7.8%	7.3%	7.3%	- 5.7%	5.7%
OTHERS	12.9	0.7%	9.9	0.5%	- 23.0%	0.0%	- 2.0%	- 21.0%
TOTAL	1 825.9	100.0%	2 047.9	100%	12.2%	1.6%	- 0.9%	11.4%



BREAKDOWN OF TURNOVER PER GEOGRAPHICAL AREA AS AT JUNE 30TH 2023

COUNTRY	Q2 only				Change			
	2022	%	2023	%	Published	Change in scope	Forex	Organic, excl. Forex effect
FRANCE	300.2	32.2%	320.3	31.6%	6.7%	0.0%	0.0%	6.7%
IBERIC	82.3	8.8%	94.3	9.3%	14.6%	0.0%	0.0%	14.6%
GERMANY	81.3	8.7%	90.6	9.0%	11.5%	4.9%	0.0%	6.6%
UK	48.0	5.2%	79.6	7.9%	65.9%	52.6%	- 3.0%	16.3%
ITALY	62.9	6.8%	78.5	7.8%	24.7%	0.0%	0.0%	24.7%
BENELUX	49.3	5.3%	55.4	5.5%	12.5%	0.0%	0.0%	12.5%
SCANDINAVIA	47.3	5.1%	46.6	4.6%	- 1.5%	- 0.4%	- 6.5%	5.4%
EASTERN EUROPE	20.4	2.2%	27.2	2.7%	33.3%	11.2%	1.9%	20.3%
SWITZERLAND	15.6	1.7%	15.3	1.5%	- 2.0%	0.0%	4.6%	- 6.6%
EUROPE (W/O FRANCE)	407.1	43.7%	487.5	48.1%	19.8%	7.7%	- 0.8%	12.9%
NORTH AMERICA	138.8	14.9%	119.2	11.8%	- 14.1%	- 15.3%	- 3.1%	4.3%
ASIA PACIFIC	78.4	8.4%	80.7	8.0%	3.0%	6.7%	- 7.7%	4.0%
OTHERS	6.9	0.7%	4.8	0.5%	- 30.2%	0.0%	- 3.5%	- 26.7%
TOTAL	931.3	100.0%	1 012.5	100%	8.7%	1.5%	- 1.4%	8.6%



BREAKDOWN OF TURNOVER PER GEOGRAPHICAL AREA AS AT JUNE 30TH 2023

COUNTRY	Q1 2023		Q2 2023		H1 2023	
	Published	Organic, excl. Forex effect	Published	Organic, excl. Forex effect	Published	Organic, excl. Forex effect
FRANCE	12.2%	12.2%	6.7%	6.7%	9.4%	9.4%
IBERIC	22.7%	20.0%	14.6%	14.6%	18.5%	17.2%
GERMANY	24.5%	18.3%	11.5%	6.6%	17.8%	12.2%
UK	70.8%	16.3%	65.9%	16.3%	68.4%	16.3%
ITALY	27.6%	27.6%	24.7%	24.7%	26.1%	26.1%
BENELUX	18.1%	18.1%	12.5%	12.5%	15.3%	15.3%
SCANDINAVIA	6.6%	12.3%	- 1.5%	5.4%	2.5%	8.8%
EASTERN EUROPE	31.1%	34.1%	33.3%	20.3%	32.2%	27.1%
SWITZERLAND	0.0%	- 4.3%	- 2.0%	- 6.6%	- 1.0%	- 5.4%
EUROPE (W/O FRANCE)	26.6%	18.9%	19.8%	12.8%	23.1%	15.8%
NORTH AMERICA	- 5.9%	9.8%	- 14.1%	4.3%	- 10.2%	6.9%
ASIA PACIFIC	12.1%	7.6%	3.0%	4.0%	7.3%	5.7%
OTHERS	- 14.7%	- 14.4%	- 30.2%	- 26.7%	- 23.0%	- 21.0%
TOTAL	15.7%	14.4%	8.7%	8.6%	12.2%	11.4%

ALLEN

Activity at the end of June 2023

Contact

comfi@alten.fr

<https://www.alten.com/fr/investisseurs/>

T : +33 (0)1.46.08.71.79

40 av. André Morizet
92513 Boulogne-Billancourt Cedex

